

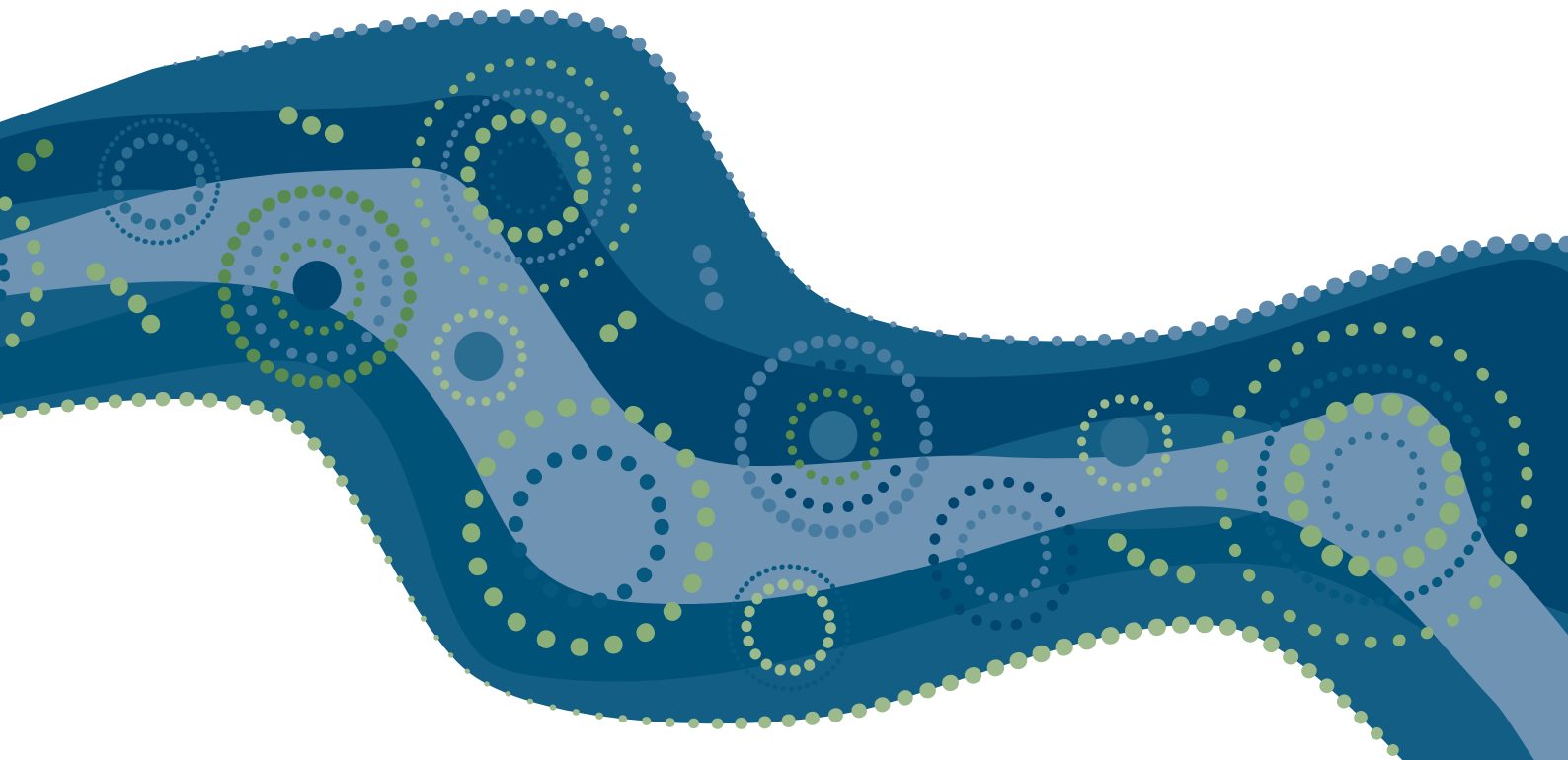


Melbourne
Montessori
College



Melbourne Montessori College

Annual Report 2024



Contents

About Melbourne Montessori College	3
Chair's Report	4
Principal's Report	5
Foundation's Report	6
50 Years of Montessori Excellence	8
Staff	9
Students	11
Finance Report	13





About Melbourne Montessori College

Our Philosophy

An authentic Montessori approach to learning provides the framework for our educational program and underpins our teaching methods and materials. The words, wisdom and practical advice of Maria Montessori and her associates are the lens through which we select, design and evaluate our program and curriculum.

Our Purpose

Our purpose is to provide an outstanding learning experience grounded in Montessori principles, while embracing subject and teaching excellence and a total commitment to the wellbeing of our students and wider community.

Our Values

We believe that self-esteem, human dignity, emotional wellbeing and the ability to communicate and cooperate effectively with others – adult to adult, adult to child or child to child – must be valued as highly as academic and material success.

We affirm that we will support and promote the principles and practice of Australian democracy, including the commitment to elected government, the rule of law, equal rights for all before the law, freedom of religion, freedom of speech and association and the values of openness and tolerance.

We affirm that we will support the ideal that all beings are interdependent and that every form of life has value, regardless of its worth to human beings. We will support and promote the belief that we need to protect and restore the integrity of Earth's ecological systems, especially biological diversity and natural processes that sustain life, and manage the use of renewable resources such as water, soil, forest products and marine life so as not to exceed rates of regeneration and protect the health of ecosystems.

We affirm that education begins at birth and continues throughout life and all our values apply equally to adults, parents, teachers, guardians and all children in the school. We believe that intelligence is not rare among human beings.

We nurture intellectual, emotional, social, spiritual and physical growth for the development of a whole and healthful being.

Chair's Report



This year, Melbourne Montessori College reached its 50-year milestone. The College's inspiring history and its clear focus on the future means we have much to be proud of.

In 2024, we continued to deliver our Towards 500: Strategic Plan — a key part of which is the Master Plan. The Board and the College Leadership Team developed the long-term blueprint for how MMC's physical campus, educational facilities and overall environment will support leading educational outcomes. The Master Plan, which is divided into individual sequenced projects, is a multi-year commitment.

Towards 500 is also focused on continuing to strengthen the College's financial health. We are in a solid position, in large part due to the financial stewardship, diligence and hard work of Business Manager, Farha Syed, and Finance Director, Court Haas.

Throughout 2024, the life of MMC was enriched by our wonderful teachers, assistants, administrators, our Principal, Daniel Thomas, and his Leadership Team of Yenny Henson, Tim Dewar, Farha Syed, Melinda Kan, Ilja van Weringh and Sarah Dekiere. Their collective passion and dedication ensured that we remained Australia's leading Montessori college.

During the year the diverse MMC community demonstrated how much our college means to them. Many families gave their time, effort and passion to ensure the success of events that were an opportunity to join together, celebrate and learn.

The College is mindful of the challenges many families faced in 2024, and continue to face, due to global unrest. We thank everyone for supporting each other.

Finally, thank you to the current Board (Clare Kermond, Court Haas, Alice Champion, Emily Dacal, Julian Isaacs, Lukas Konieczny, Tribly Dsouza and Nicole Kirkwood) and to Skye Tipler who stepped away from the Board in 2024. The College is fortunate to a diverse group of directors who have dedicated their time to making MMC a better place for everyone. Thank you.

Neil Cook

**Chair, Melbourne
Montessori College
Board**





Principal's Report



In 2024, Melbourne Montessori College has embraced a spirit of reflection, celebration, and forward-thinking action. Marking our 50th anniversary, this milestone year has provided a powerful opportunity to honour our history, recognise our achievements, and chart a purposeful course for the future. True to Maria Montessori's philosophy, we have taken intentional steps to nurture our students, strengthen our community, and shape the next 50 years of educational excellence.

In classrooms, students embraced hands-on, purposeful learning. They solved real-world challenges and took responsibility for their education. Our staff, with their unwavering commitment and vision, took action to innovate, inspire and guide students to discover their unique potential.

As always, parents were integral partners in this journey and demonstrated their dedication to our shared values through their ongoing support and collaboration.

This year also marked significant milestones for the future of Melbourne Montessori College. We launched and implemented our new strategic plan, Towards 500, and developed the new Master Plan for Brighton and Caulfield. From new initiatives that enhance our curriculum to a collective commitment to sustainability and inclusivity, in 2024 we continued to build a legacy that will empower generations of learners.

This would not be possible without our students, parents, staff and alumni. To our students, thank you for embodying the spirit of curiosity, courage and compassion. To our parents, your trust and active involvement are the cornerstones of our success. To our staff, your dedication and passion ensure we continue to grow and thrive.

The 50-year milestone is not just a reflection on the past, but a call to action for the future. We will continue to build a community where every learner is inspired to take meaningful action, to dream boldly and to create a better world.

Here's to another 50 years of learning and growth.

Daniel Thomas

Principal, Melbourne Montessori College



Foundation's Report



To mark our 50th anniversary, the Foundation established the MMC Legacy Fund. This endowment ensures a permanent, growing source of financial support, allowing current and future students to benefit from a Montessori education. In FY24, \$38,509 was raised, with additional pledges for the Legacy Fund committed through to FY28. Thank you to those members of our community who have already generously supported the Legacy Fund through donations and annual pledges.

This year, the College and Foundation secured \$757,195 in philanthropic and government grants. We were thrilled to announce that we secured a \$750,000 grant from the Victorian School Building Authority to refurbish our Cycle 1/Early Learning classrooms. Our sincere gratitude goes to the Foundation, Board, Executive Team, and Kneeler Design Architects for their efforts in securing this grant. An additional grant valued at \$7,195 was secured from The Foundation of Graduate Studies in Childhood Studies. The grant was used to send five Cycle 1 teachers to Montessori Schools and Centres Australia's (MSCA) annual two-day conference in Sydney.

The Foundation is delighted to award five senior school scholarships totalling \$49,500 for the 2025 school year.

In 2024, the Voluntary Building Fund Levy raised \$122,828. A special thank you to the families who generously supported this tax-deductible levy, which supports loan repayments on the Brighton Campus and building maintenance.



Each year, the Foundation distributes a percentage of its assets to the College in the form of a grant. At the discretion of the Principal, this grant is directed to either the Library, Building, or Scholarship Fund. In 2024, a grant of \$3,500 was awarded to the MMC Building Fund for the Brighton Library.

The financial operations for the year ended 31 December 2024 resulted in a total comprehensive net profit of \$43,329. The MMC Foundation endowment fund stands at \$159,907.

The Foundation's successes stem from the dedication of our Board, composed of current and alumni parents passionate about the school's mission. We extend our enormous gratitude to Directors Hali Halphen, Sarah Turkopp, Sascha McGregor, Sonja Felderhof, and Julian Issacs for their invaluable contributions.

Supporting the Foundation is an investment in the future, with lasting returns. Contributions to our Legacy Fund, Scholarship, Building, and Library Funds do more than enhance students' lives—they strengthen our entire community. Every donation, regardless of size, creates a ripple effect, where the impact of generosity reaches far beyond the initial gift.

Thank you to the Melbourne Montessori College community for its unwavering support and trust.

Melissa Schraner

Chair, Melbourne Montessori College Foundation



50 Years of Montessori Excellence

In 2024, MMC marked five decades of educational innovation, community and growth with a Founders Day event that brought together Brighton and Caulfield students. After a ceremony at Caulfield Campus, the Brighton Campus became the centre of carnival-style celebrations.

To honour the contributions of past and present students, teachers and families, in June, MMC also hosted a gala at the Arts Centre Melbourne. It was an evening of incredible performances, reflections on the college's legacy and celebrated the passion and dedication that have shaped MMC over the last half-century.

The year was also a time to embrace the future and to lay the foundations for the next 50 years through MMC's ambitious Master Plan — a plan that envisions growth and transformation while maintaining core Montessori values and commitment to student-centred learning.

Key goals for the future include expanding and modernising our facilities, investing in sustainable practices to create eco-friendly learning environments, and enhancing the College's curriculum offerings to prepare students for a globalised world.

It is an exciting time to be part of MMC.

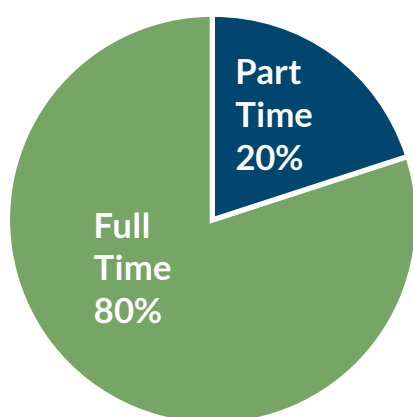


Staff

The staff at our school are vital to its growth, professionalism and success. Each member of the MMC team is committed to supporting every child as they develop, learn and explore.

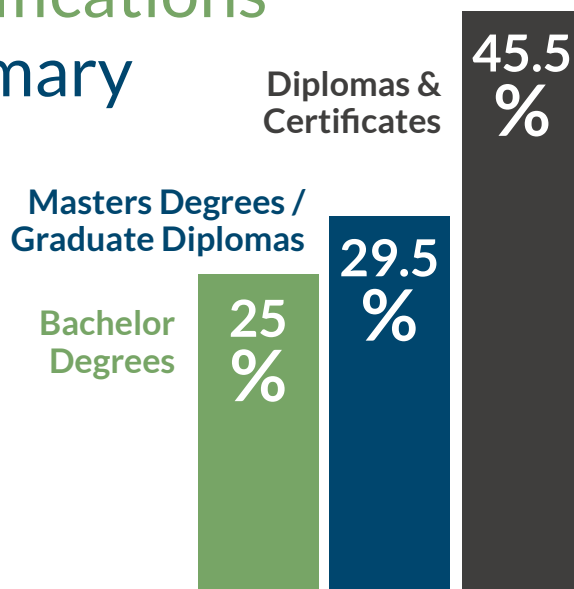
At the end of December 2024, the school had 66 staff: 52 female and 14 male members. 53 of those members were full-time and 13 were part-time.

2024 Staff Members



Full Time vs. Part Time

Qualifications Summary



Professional Development and Compliance Training

Melbourne Montessori College actively encourages all staff to engage in ongoing learning as part of a learning community. Illustrating this, professional and personal learning opportunities are provided through school-based, online and external programs.

Compliance training is essential for risk management and to meet the responsibilities of the school to our staff in providing the skills and knowledge necessary for duty of care and OH&S.

During 2024, courses, workshops and briefings were held that covered:

Level 1 and
2 First Aid
training

Diabetes
education

Asthma
training

Mandatory
reporting
compliance

Montessori
conferences

CPR
updates

Anaphylaxis
training

Emergency
control
and warden
training

IB courses
and
conferences

Child safety
and wellbeing



Students

Throughout the year we closely monitored our students, including their attendance, NAPLAN results, the outcomes of our graduates and the pathways they took after leaving MMC.

Here is a snapshot of what our students achieved...

Attendance

Student attendance is recorded online twice daily through the school's database. Teachers and administration staff monitor student absences and parents are informed of absences when appropriate.

2024 88%

2023 85.10%

Overall, in 2024, average attendance was 88%, compared to 85.10% in 2023.

2024 NAPLAN Results

In 2024, all students in Years 3, 5, 7 and 9 completed the National Assessment Program – Literacy and Numeracy.

Our student results were:

	Reading	Writing	Spelling	Grammar	Numeracy
Year 3	459	442	432	442	430
Year 5	518	529	509	526	512
Year 7	601	522	543	532	541
Year 9	607	585	592	591	560

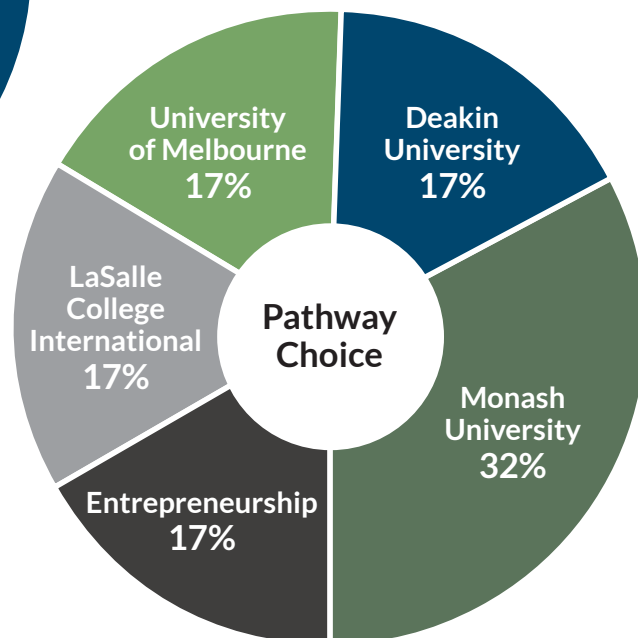
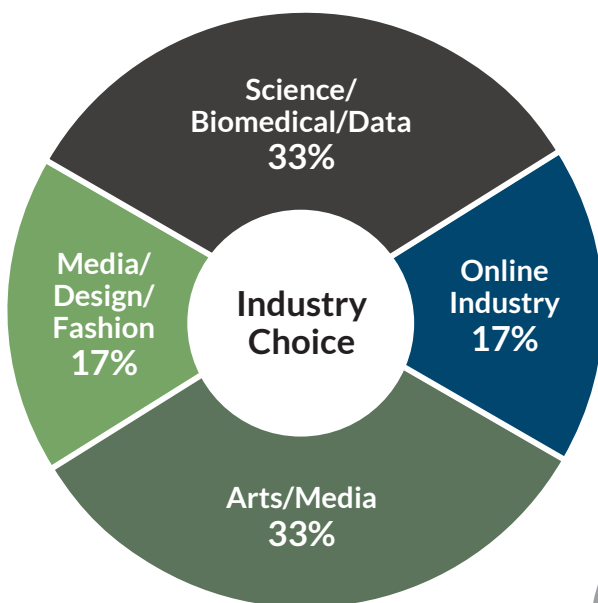
Source: MySchool Website

Graduate Outcomes

We are extremely proud of our 2024 Year 12 cohort, who have demonstrated resilience, dedication, and an unwavering commitment to their learning journey.

Every student in our 2024 cohort was accepted into a course aligned with their interests and aspirations, a testament to their hard work and the support of our dedicated educators.

Additionally, 40% of our students achieved an ATAR equivalent of 80 and above, positioning them among the top 20% of students nationwide.



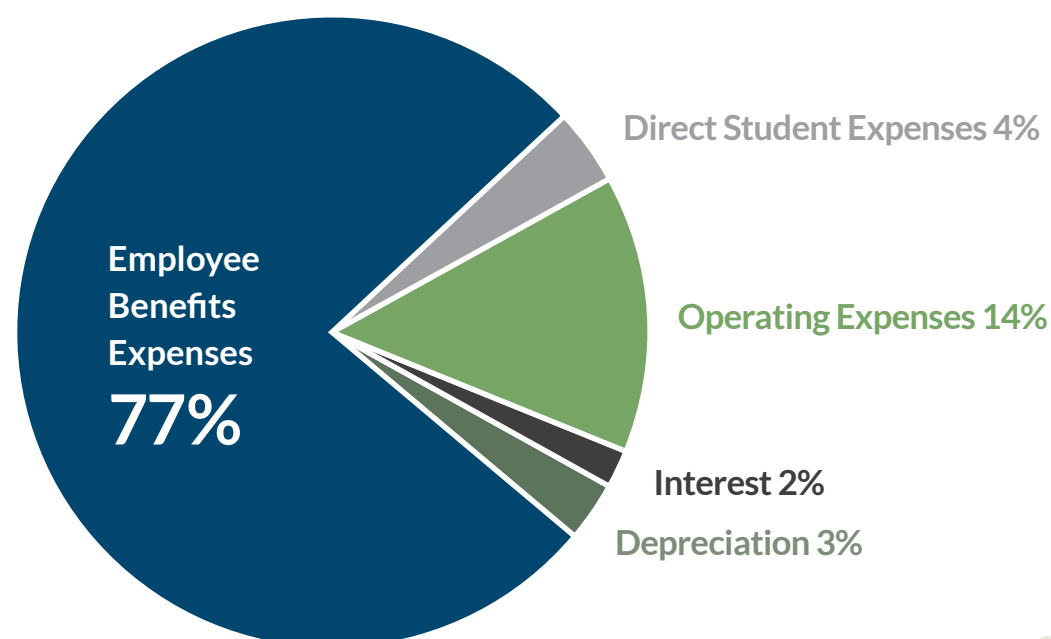
Finance Report

These charts are a summary of Melbourne Montessori College's income and expenses for 2024.

MMC Income



MMC Expenses





Melbourne
Montessori
College

Inspiring our children
to create a better world
with their *own* two hands

Contact Us

03 9131 5200
admin@mmc.vic.edu.au

Caulfield Campus

6 Roselea Street
Caulfield South VIC 3162

Brighton Campus

741 Hawthorn Road
Brighton East VIC 3187

mmc.vic.edu.au

